



Percussions  
de Strasbourg

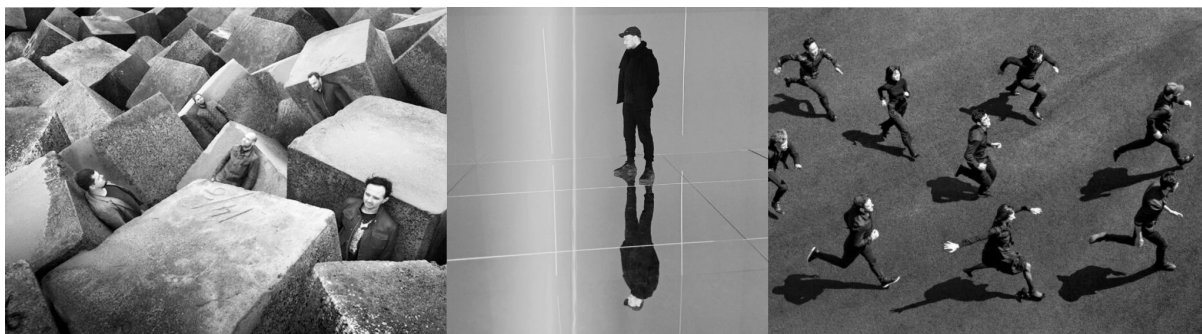
15 place André Maurois  
67200 Strasbourg — France

Tél, +33 (0)3 88 27 75 04  
[www.percussionsdestrasbourg.com](http://www.percussionsdestrasbourg.com)

Siret — 303 587 372 00028

## TECHNICAL RIDER

### "WAYS OF [ ]" by Zeno VAN DEN BROEK



**For 10 musicians players : 3 percussionists from HIIIT (formerly Slagwerk Den Haag), 3 percussionists from Percussions de Strasbourg and 4 robotic percussion machines, developed and built by the Dutch composer and audiovisual artist Zeno van den Broek**

Update : 2025-09-17

#### **Technical contact :**

Technical manager : Laurent FOURNAISE  
[regie@percussionsdestrasbourg.com](mailto:regie@percussionsdestrasbourg.com) / +33(0) 6 09 99 21 37

Lighting designer : Rui MONTERO  
[rui-monteiro@rui-monteiro.com](mailto:rui-monteiro@rui-monteiro.com)

Sound manager : Olivier PFEIFFER  
[olivierpfeiffer@gmail.com](mailto:olivierpfeiffer@gmail.com) / +33(0) 6 63 98 07 96

Composer and audiovisual artist : Zeno van den BROEK  
[info@zenovandenbroek.com](mailto:info@zenovandenbroek.com)



**Crew on tour :**

3 percussionists from HIIIT (Jonathan BONNY, Ryoko IMAI and Kalina VLADOVSKA), 3 percussionists from Percussions de Strasbourg (François PAPIRER, Yi-Ping YANG, Hyoungkwon GIL), 1 composer and audiovisual artist (Zeno van den BROEK), 1 technical/light manager (Laurent FOURNAISE), 1 sound manager (Olivier PFEIFFER), 1 production manager, 1 assistant to Zeno

Time of the show : about 65 minutes

**Transport :**

Percussions de Strasbourg will come with some musicians, 2 technicians, 1 production manager and the instruments by rent vehicle “Jumper” 9 seats.

**Specifications :**

total weight : 3,5 tons / length : 6,5 m., width : 2,1 m., height : 2m.60

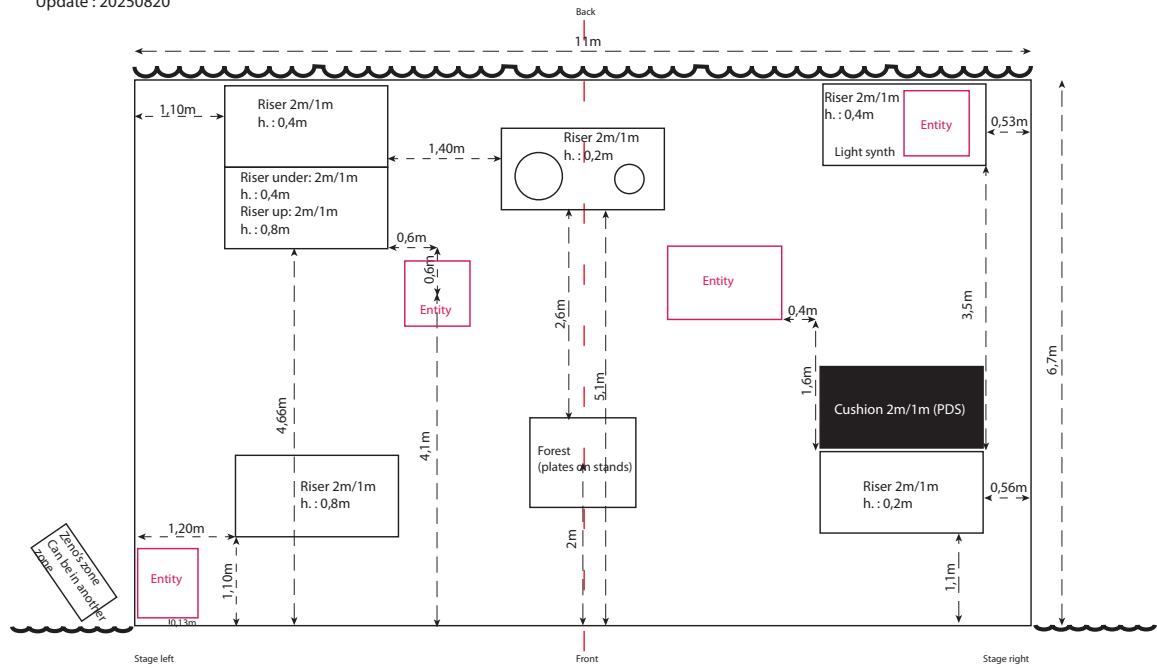
**Please provide us a city map which show us the concert place or GPS coordinates and a secure parking lot for the vehicle at (at least near) the performance place.**

**STAGE :**

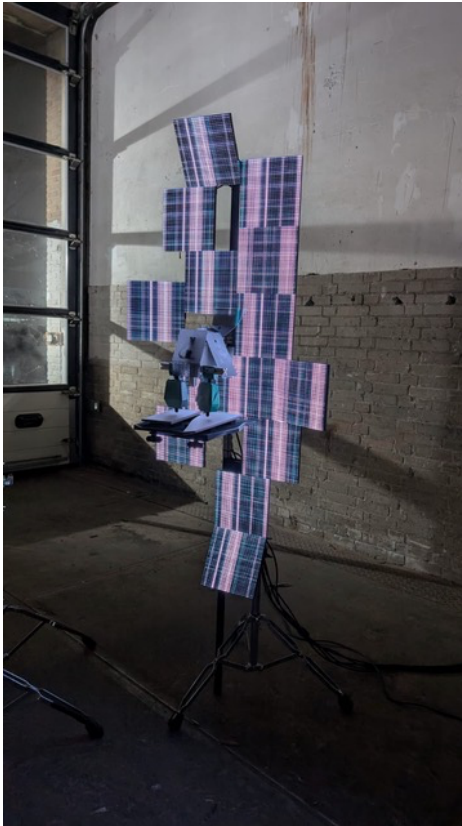
**Please send us technical rider and plans from the venue to study layout.**

To be provided by the organizer :

- Stage opening : **minimum 11m.**
- Stage depth : **minimum 7m.**
- 7 black risers 2m x 1m with feet, no cross feet ! Because we have to put instruments under some of them :
  - 2x 20cm
  - 3x 40cm
  - 2x 80cm
- Wall black curtain
- Floor : standard **black** theater **floor**, black ballet floor / linoleum or black short carpet if the floor is not black.



## Entities



We come with 4 “digital entities” and clamps to connect on stands

The data for the screens goes through UTP cables from central computer, which we bring ourselves.

**IMPORTANT : Please be advised that our entities include strobe effects and flashing lights.**

## BACKLINE :

If we can come with a van, we will provide all the instruments, [instruments list here](#).

## Central computer system (provided by Zeno) :

**IMPORTANT** : the “Zeno’s desk” will be placed in backstage (we ask for “change over” area 2 please).

## **Please provide us :**

- a video feedback from the stage for him
- A table about 140 cm x 70 cm / height : 75 cm

## Light synth :

To generate bass tones Zeno has developed a ‘light synthesizer’, which is a portable mechanical instrument that uses light to generate square waves with light inside. We come with.



**LIGHT** : light technician on tour : Laurent

Update : 2025/09/04

## ASTERA

16x [Astera Titan Tube](#) (2 full boxes)

1x [Astera Box](#) (1 spare)

26x [Tube Holder](#) (with 2 full boxes, 32x)

9x [wing plate](#)

## OTHER

4x Profile, zoom 15-30 deg, Led or Gel LEE201

1x smoke Machine

Curtain call lights

## DESK LIGTH

1x GIO@5

1x external monitor

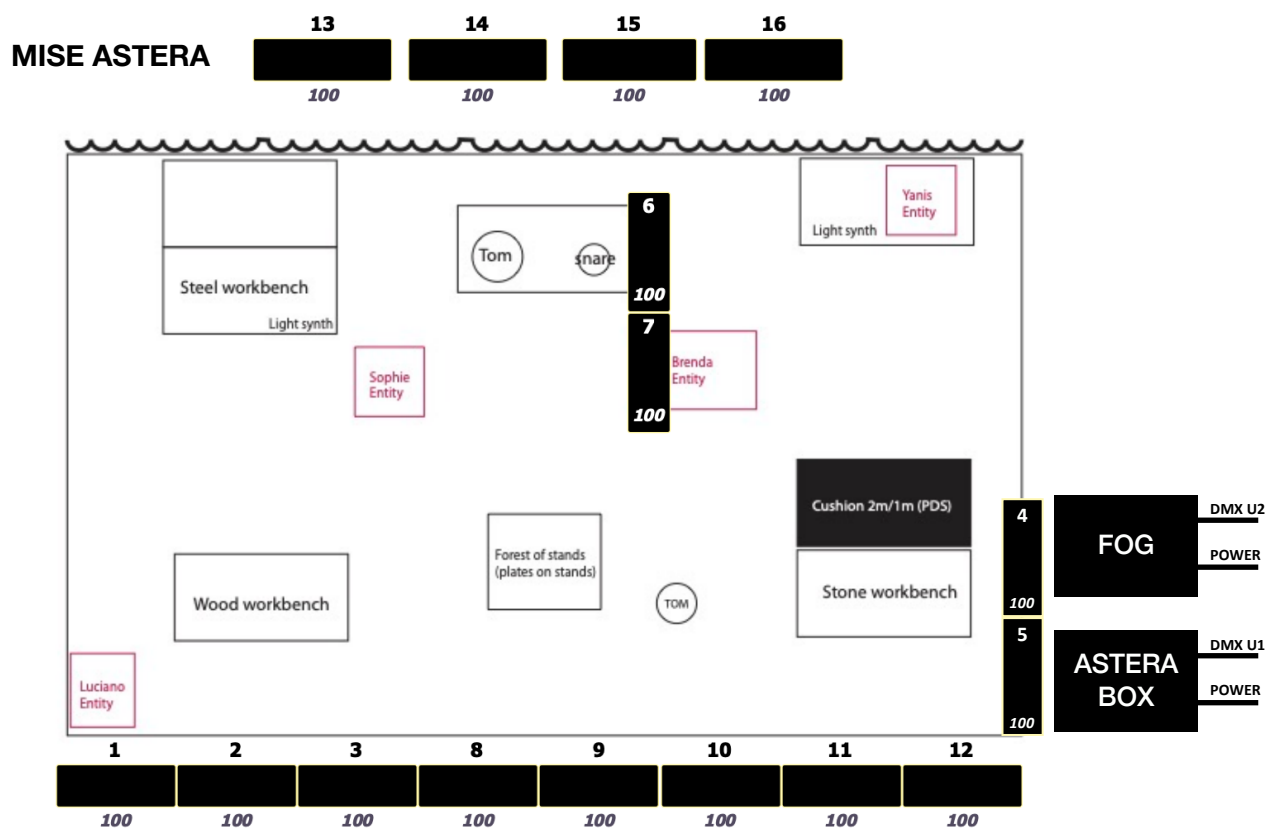
## NETWORK

Port 1 : 10.XXX.XXX.XXX (sACN)

Port 2 : 192.168.50.60 (Link with Zeno in OSC)

## UNIVERS

We need 2 separated universes. One for the Astera and a second for the front profile, FOG and light for applause.





| CHANNELS | UNIVERS | ADDRESS | DESCRIPTION  |
|----------|---------|---------|--|
| 1        | 1       | 1       | Astera titan tube<br>70: DIM RGBW DIM RGBW (PIXEL = 8; STROBE = OFF) |
| 2        | 1       | 41      | Astera titan tube<br>70: DIM RGBW DIM RGBW (PIXEL = 8; STROBE = OFF) |
| 3        | 1       | 81      | Astera titan tube<br>70: DIM RGBW DIM RGBW (PIXEL = 8; STROBE = OFF) |
| 4        | 1       | 121     | Astera titan tube<br>70: DIM RGBW DIM RGBW (PIXEL = 8; STROBE = OFF) |
| 5        | 1       | 161     | Astera titan tube<br>70: DIM RGBW DIM RGBW (PIXEL = 8; STROBE = OFF) |
| 6        | 1       | 201     | Astera titan tube<br>70: DIM RGBW DIM RGBW (PIXEL = 8; STROBE = OFF) |
| 7        | 1       | 241     | Astera titan tube<br>70: DIM RGBW DIM RGBW (PIXEL = 8; STROBE = OFF) |
| 8        | 1       | 281     | Astera titan tube<br>70: DIM RGBW DIM RGBW (PIXEL = 8; STROBE = OFF) |
| 9        | 1       | 321     | Astera titan tube<br>70: DIM RGBW DIM RGBW (PIXEL = 8; STROBE = OFF) |
| 10       | 1       | 361     | Astera titan tube<br>70: DIM RGBW DIM RGBW (PIXEL = 8; STROBE = OFF) |
| 11       | 1       | 401     | Astera titan tube<br>70: DIM RGBW DIM RGBW (PIXEL = 8; STROBE = OFF) |
| 12       | 1       | 441     | Astera titan tube<br>70: DIM RGBW DIM RGBW (PIXEL = 8; STROBE = OFF) |
| 13       | 1       | 481     | Astera titan tube<br>70: DIM RGBW DIM RGBW (PIXEL = 8; STROBE = OFF) |
| 14       | 1       | 485     | Astera titan tube<br>70: DIM RGBW DIM RGBW (PIXEL = 8; STROBE = OFF) |
| 15       | 1       | 489     | Astera titan tube<br>70: DIM RGBW DIM RGBW (PIXEL = 8; STROBE = OFF) |
| 16       | 1       | 493     | Astera titan tube<br>70: DIM RGBW DIM RGBW (PIXEL = 8; STROBE = OFF) |
|          |         |         |  |
| 81       | 2       | 11      | Profile  |
| 82       | 2       | 21      | Profile  |
| 83       | 2       | 31      | Profile  |
| 84       | 2       | 41      | Profile  |
|          |         |         |  |
| 90       | 2       | 500     | FOG  |
|          |         |         |  |
| 500      | X       | X       | Applause Light   |
| 1001     | X       | X       | House Light  |



**SOUND :**

Sound manager : Olivier PFEIFFER / [olivierpfeiffer@gmail.com](mailto:olivierpfeiffer@gmail.com) / +33(0) 6 63 98 07 96

To be provided by the organizer :

6 x power sockets minimum

Table space, minimum 150 x 60 cm.

Mikes (please see the stage plan and list under)

Main PA :

- Professional, full-range, three-way stereo system.
- The power of the equipment suited to the size of the room.
- Configuration ensuring equal coverage of the entire audience area.
- Subs on a separate matrix.

Mixing desk :

- Digital Desk (we prefer some with DANTE or ADAT otherwise analog wire can be used)

- **Preferred model: Yamaha CL5.**
- The technical desk **in the center of the audience** (for audio mixing desk and laptop computer, audio interface)
- Desk space for computer (Zeno) sending data to the Digital Entities.



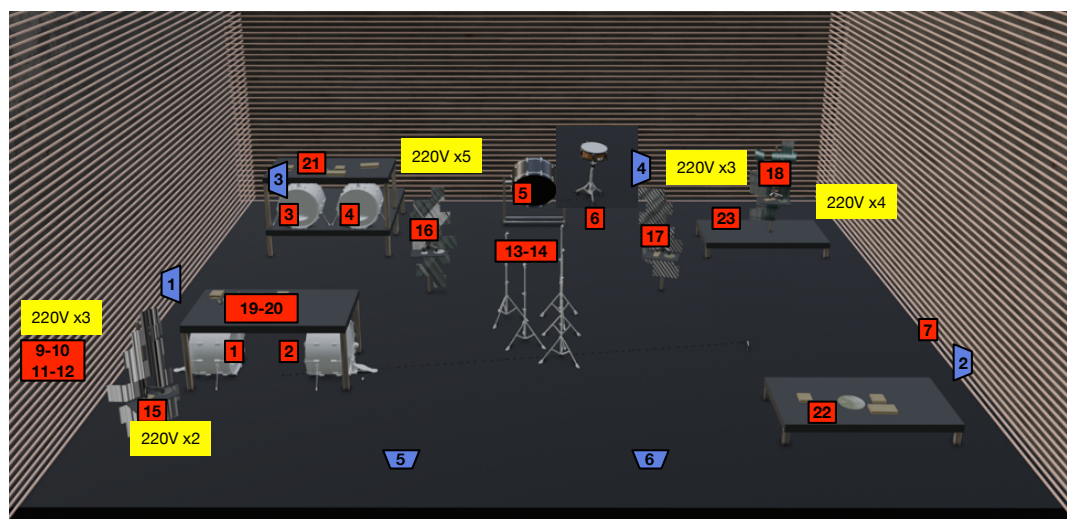


## Ways of [] ING SOUND 01/09/2025

Olivier Pfeiffer - olivierpfeiffer@gmail.com - 0033 6 63 98 07 96



Percussions  
de Strasbourg



| IN |                 |           |                           | OUT      |              |  |       |
|----|-----------------|-----------|---------------------------|----------|--------------|--|-------|
| 1  | Kick 1          | Senn E602 | short stand               | mix1     | UP stage R   | PS8 / 108  | Floor |
| 2  | Kick 2          | Senn E602 | short stand               | mix2     | UP stage L   | PS8 / 108  | Floor |
| 3  | Kick 3          | Senn E602 | short stand               | mix3     | Down stage R | PS8 / 108  | Floor |
| 4  | Kick 4          | Senn E602 | short stand               | mix4     | Down stage L | PS8 / 108  | Floor |
| 5  | TOM 22"         | AKG 214   | normal stand              |          |              |  |       |
| 6  | snare           | AKG 214   | normal stand              |          |              |  |       |
| 7  | Tom             | DPA 4099  | DPA D-clip                |          |              |  |       |
| 8  |                 |           |                           |          |              |  |       |
| 9  | LightsynthL     | DI        |                           |          |              |  |       |
| 10 | LightsynthR     | DI        |                           |          |              |  |       |
| 11 | VoicesL         | DI        |                           |          |              |  |       |
| 12 | VoicesR         | DI        |                           |          |              |  |       |
| 13 | cymb            | KM184     | normal stand              | mix9     | Fx 1         |  |       |
| 14 |                 | km184     | stéréo bar                | mix10    | Fx 2         |  |       |
| 15 | Luciano heavy   | DPA 4099  | DPA U-clip                |          |              |  |       |
| 16 | Sophie Big      | DPA 4099  | DPA U-clip                |          |              |  |       |
| 17 | Brenda Wide     | DPA 4099  | Normal stand + DPA U-clip |          |              |  |       |
| 18 | Yannis Humanoid | DPA 4099  | DPA U-clip                |          |              |  |       |
| 19 | bench woodL     | KM184     | normal stand              |          |              |  |       |
| 20 | bench woodR     | KM184     | stéréo bar                | stéréo L | FOH + sub    | FOH must be homogeneous for the audience<br>105db SPL without distortion<br>Digital desk are welcome |       |
| 21 | bench metal     | KM184     | normal stand              | stéréo R |              |  |       |
| 22 | bench stone     | KM184     | table stand               |          |              |  |       |
| 23 | bench kalina    | KM184     | normal stand              |          |              |  |       |
| 24 | desk speak      | SM58      |                           |          |              |  |       |
| 25 | FX1L            |           |                           |          |              |  |       |
| 26 | FX1R            |           |                           |          |              |  |       |
| 27 | FX2L            |           |                           |          |              |  |       |
| 28 | FX2R            |           |                           |          |              |  |       |
| 29 | phoneL          |           |                           |          |              |  |       |
| 30 | phoneR          |           |                           |          |              |  |       |

Extra cables :  
8 x jack jack 6,35 3m  
2 x XLR 25m  
2 x XLR 15m

### Intercom :

3 intercoms are needed (1 on backstage for Zeno, 2 on régie for Olivier and Laurent).





### Timetable and local crew provided by the organizer :

| DATE | TIME       | DESIGNATION  | STAGE  | LIGHT                                       | SOUND                                       |
|------|------------|--|--|---|---|
| D-2  |            | Arrival of the crew  | 1 person                                     |   |   |
| D-1  | Two shifts | Set-up stage, light and sound.<br>Unloading van.<br>Set up entities, instruments,<br>check sound, light settings and<br>focus. | 1 technical<br>manager<br>+ local crew       | 1 light<br>manager<br>2 light<br>technician | 1 sound<br>manager<br>1 sound<br>technician |
| D    |            | Soundcheck, light check,<br>rehearsal, concert,<br>dismantling, loading  | 1 technical<br>manager<br>1 stage<br>manager | 1 light<br>manager<br>1 light<br>technician | 1 sound<br>manager<br>1 sound<br>technician |
| D+1  |            | Departure of the crew  |  |   |   |

### With pre-setup :

| DATE | TIME | DESIGNATION   | STAGE  | LIGHT                                       | SOUND                                       |
|------|------|---|--|---|---|
| D-1  |      | Arrival of the crew.<br><b>Stage, light and sound pre<br/>mounting by local crew needed</b>   | Local crew                                   | Local crew                                  | Local crew                                  |
| D    |      | Unloading van<br>Set up entities, instruments,<br>check sound, light settings and<br>focus, rehearsal, concert,<br>dismantling, loading | 1 technical<br>manager<br>1 stage<br>manager | 1 light<br>manager<br>1 light<br>technician | 1 sound<br>manager<br>1 sound<br>technician |
| D+1  |      | Departure of the crew   |  |   |   |

### Dressing rooms and dresser :

We need dressing rooms for 6 artists with soaps, towels. We highly appreciate bottles of water for 11 persons, tea, coffee refills, cakes, dried fruit, fruit...

A dresser will be needed the day of performance before the dress rehearsal to iron the x7 overalls. No washing will be necessary.