



Percussions
de Strasbourg

15 place André Maurois
67200 Strasbourg —France

Tél, +33 (0)3 88 27 75 04
www.percussionsdestrasbourg.com

Siret — 303 587 372 00028

TECHNICAL RIDER

MUSIC IN THE BELLY

SIMON STEEN ANDERSEN

DATE

HOUR

PLACE

Last update: 18/11/2022

Technical contact :

Technical manager: Claude MATHIA

claudemathia@gmail.com

tél: +33(0)6 73 32 53 52

Team on tour :

6 musicians

1 technical manager / light manager

1 stage manager

1 sound manager or Simon Steen Andersen

1 tour manager

TRANSPORTATION

All Percussions de Strasbourg equipment will be transported by van with tailgate.

Truck Specification:

Dimensions: L 6m, W 2.50m, H 3.90m

Provide a secure place to park the truck taking into account the dimensions of the truck (see above).

STAGE:

Necessary dimensions of the stage cage:

- From wall to wall, 17m
- Depth, 15m from the stage frame
- The pipes for the red curtain has to be at 4m high and the one on the back needs teaser over it.

Dimensions and specifications of the play space:

- Opening to the stage frame 12m maximum
- Depth 10m
- The entire playing area is filled with water, 2cm high maximum. To do this, we will use a dance floor. Pipes 5cm diameter placed below the dance floor and around the edge of the play area will act as a ledge. Provide a polyane to place under the dance floor to protect the floor.

IMPORTANT : AN ARRIVAL AND EVACUATION OF WATER NEAR THE SCENE WILL BE NECESSARY. TO EMPTY THE POOL WE WILL NEED WATER VACUUMS.

Sound: see document attached

Micro lines has to mounted before our arrival

The Company will bring:

- 6 hoverboard equipped with T-bone CC100 pickups
- 3 whip with DPA 4060 pickups
- 1 Marimba
- 3 sets of rattlesnakes
- 2 large stands with plate bells
- 3 small tables
- 2 percussion tablets
- 1 crank machine
- 1 dummy to be suspended and controlled via a system of stilts and pulleys (or by two winches, if the venue has some).
- Red curtains 4m high (length 12m at the bottom, 7m on the sides)

Light: see document attached.

Light has to be mounted and tested before our arrival

The light will be controlled by our computer during the show, to do the focusing we can use the venue's desk

Provide 1 hazer.

PROVISIONAL PLANNING (staff requested)

The local staff will be present at the times indicated on the schedule below.

DATE	HEURE	DESIGNATION	PLATEAU	LUMIÈRE	SON
D-1	09:00-12:00 13:00-18:00 18:00-22:00	- Set up curtains, instruments, pulleys, dummy - adjust the microphone lines from the ceiling, light focus - install the structure and the dance floor for the water	1 manager 3 technicians	1 manager 2 technicians	1 manager 1 technician
D	09 :00-12:00	- Line check - Water on stage.	1 technician		1 manager 1 technician
	14 :00-17:00	Rehearsal	1 technician	1 manager	1 manager
	17 :00-18:00	Clean stage	1 technician	1 technician	1 technician
	20 :00	Door opening			
	20:30-21 :1	Concert	1 technician	1 technician	1 technician
	21 :30-23:00	Empty the water on stage Dismantle and load.	3 technicians	2 technicians	1 technician
D+1	09 :00	Van departure			

DRESSING ROOM/CATERING

Provide dressing rooms for all the staff of the troupe, knowing that it is made up of 6 women (6 musicians, 1 technician, 1 administrator). The dressing rooms must be equipped with toilets, towels, soap and lighted mirrors. A caterer (tea, coffee, biscuit, dried fruit, charcuterie, cheese, bread) will be greatly appreciated.

Music in Belly

Simon Steel-Andersen

Sound Rider Version 5 - 2 Oct 2023

Description

This document is a technical rider who concern only the sound and electronic part of the show.

Sound equipment

All material should be provided by the venue unless it is explicitly mentioned by this rider.

The PA should be correctly adjusted to have the better sound quality. Front-fills are highly appreciated.

The sound desk should be in the same acoustic space as the stage, in the center of the venue.

Sound diffusion

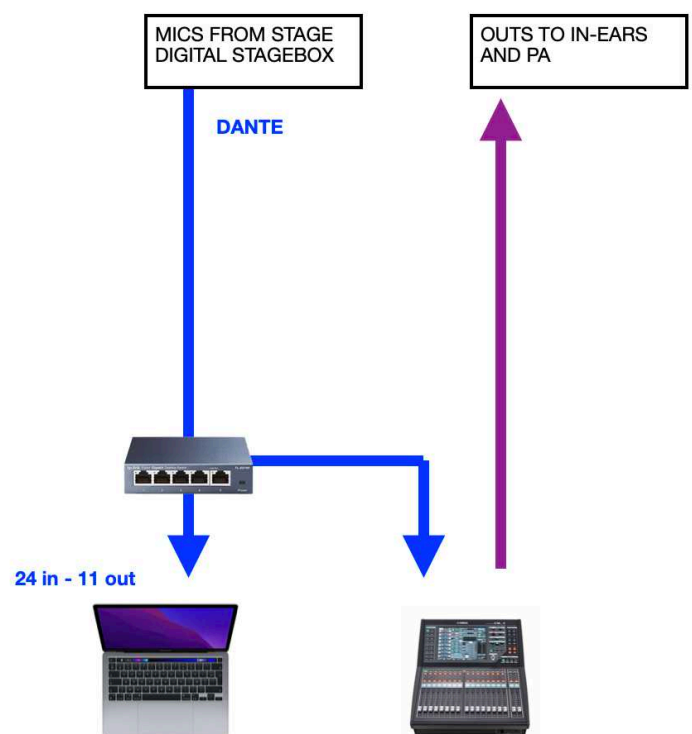
- A Main Stereo PA with subwoofer and front-fills correctly tuned for the venue
 - 2 surround loudspeaker, behind the audience turned against the wall (8' or 12')
 - 1 speaker backstage, against the back wall
 - 6 wireless In-Ear transmitters with 8 pockets receivers
-

Digital mixing desk and preamp

- A 24 inputs stagebox with **DANTE** is mandatory. All microphones are directly routed to the computer (Yamaha RIO32/24, DAD AX32, etc.)
 - Yamaha QL1 (or equivalent) is used to route output from the computer to the sound system.
 - A DANTE configured network switch
 - Sampling frequency is 48kHz
-

Wireless

- 9 wireless microphone channels are needed including 6 with a **shure TA4** connector. In case of other inputs, you'll have to provide adaptors.
- 6 wireless in-ear transmitter with 8 pockets receivers
- The frequency plan and tuning should be done **before** our arrival



Input Patch MIB

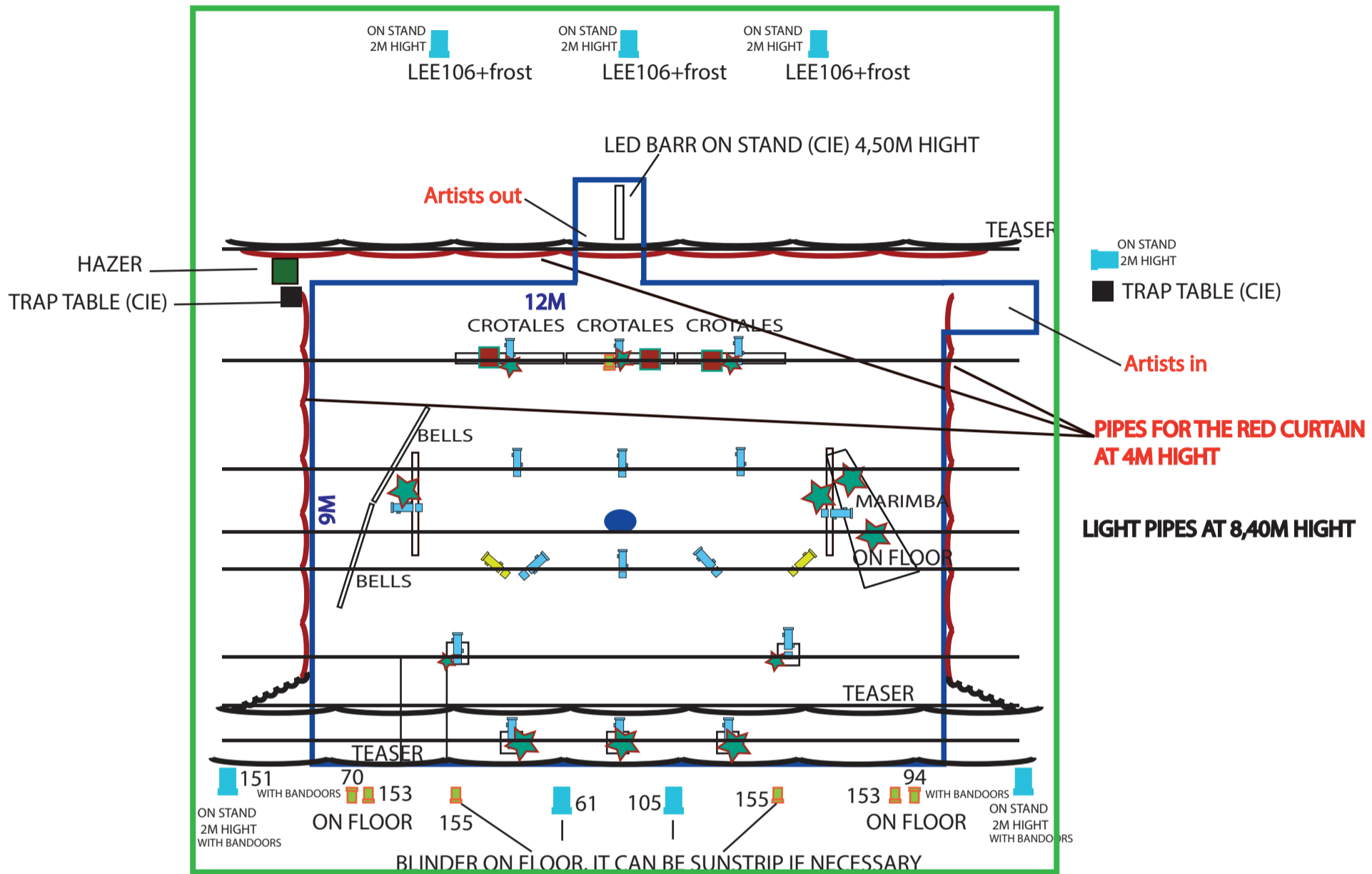
input	NAME	MIC	PLACE
1	Crotales Left	sm57	hanged from grill
2	Crotales Center	sm57	hanged from grill
3	Crotales Right	sm57	hanged from grill
4	Bell plates	sm57	hanged from grill
5	Marimba L	km184	under the marimba
6	Marimba R	km184	under the marimba
7	Music box Left	Km184	hanged from grill
8	Music box Center	Km184	hanged from grill
9	Music box Right	Km184	hanged from grill
10	Spinning Top	Dpa 4099	With violin clip
11	Miron - Bells 1	C411	hanged from grill
12	Miron - Bells 2	C411	hanged from grill
13	Miron - Spring 1	C411	hanged from grill
14	Miron - Spring 2	C411	hanged from grill
15	Whip stick 1	DPA4060 black	Wireless
16	Whip stick 2	DPA4060 black	Wireless
17	Whip stick 3	DPA4060 black	Wireless
18	Hoverboards 1	Ovid system with TA4 connector provided	Wireless
19	Hoverboards 2		Wireless
20	Hoverboards 3		Wireless
21	Hoverboards 4		Wireless
22	Hoverboards 5		Wireless
23	Hoverboards 6		Wireless
24	Talkback	Sm58	From FOH, go to ears
25	Computer Amp L	DANTE	
26	Computer Amp R	DANTE	
27	Computer Tape L	DANTE	
28	Computer Tape R	DANTE	
29	Computer Back L	DANTE	
30	Computer Back R	DANTE	
31	Computer Stage	DANTE	
A	Spinning Top FAKE	KM184	Not plugged, hanged from grill
B	Phone FAKE	KM184	Not plugged, hanged from grill
C	Marimba FAKE	KM184	Not plugged, hanged from grill

Output Patch MIB

1	Main PA L
2	Main PA R
3	Surround L
4	Surround R
5	Subwoofer L
6	Subwoofer R
7	Front-fills L
8	Front-fils R
9	In ear player 1
10	In ear player 2
11	In ear player 3
12	In ear player 4
13	In ear player 5 and 6 (2 receivers)
14	In ear tech (2 receivers)
15	Backstage C

STAGE PLAN MUSIC IN THE BELLY

BACKSTAGE



FRONT STAGE



AUDIENCE

- 6 X STANDS 2M HIGHT
- 3 X LED PROFILE cold white (ETC S4 Lustr 2 for example)
- 6 X Pc 2kw
- 13 X Pc 1kw
- 2 X PROFILE RJ613
- 16 X PROFILE RJ614
- 1 PROFILE RJ613 or PC 1kw with bandors
- HAZER
- CURTAIN
- TEASER
- RED CURTAIN (CIE)
- MICROPHONE
- DUMMY (Called "MIRON")
- WATER SPACE
- DIMENSION OF THE STAGE