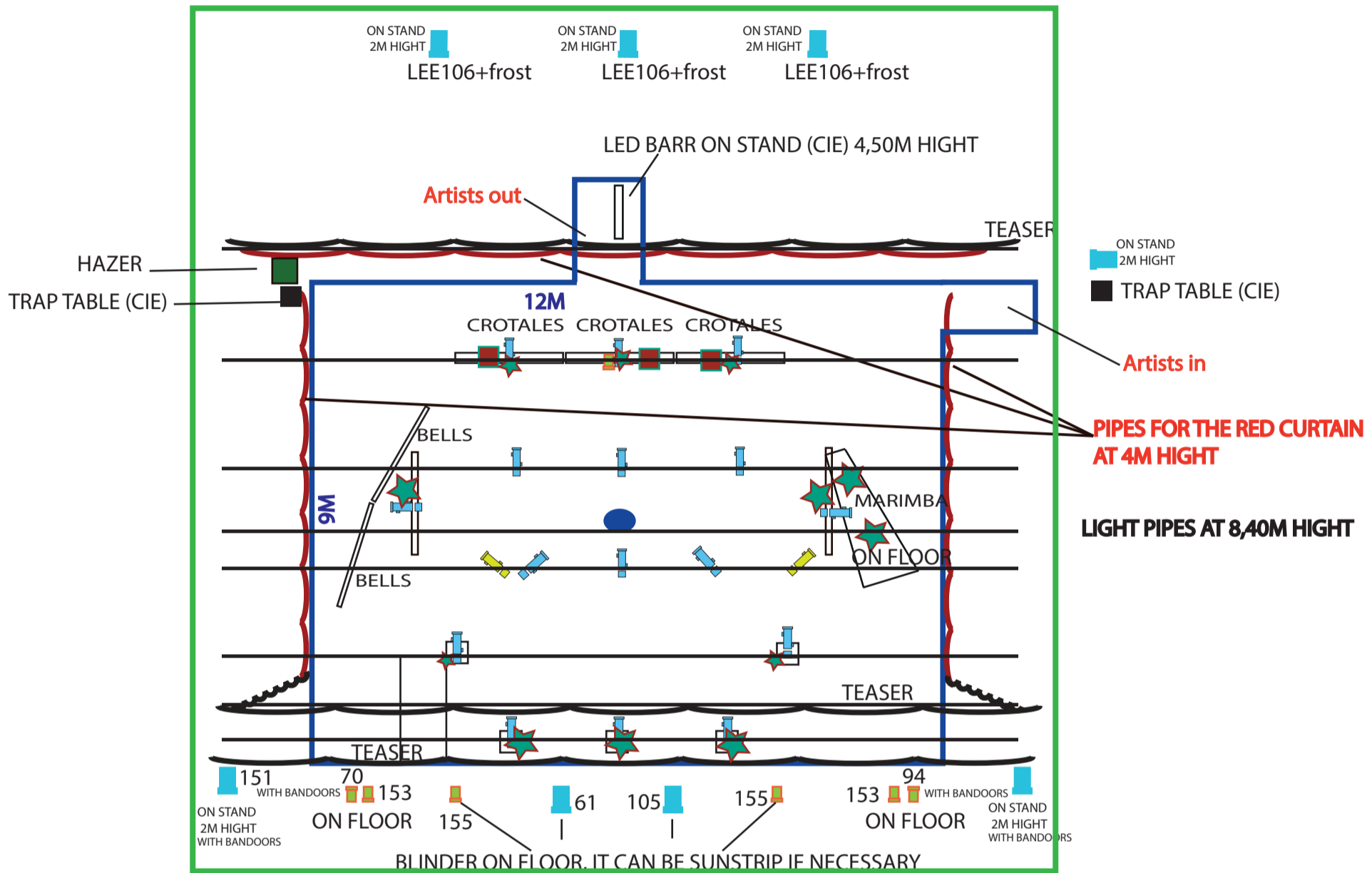


STAGE PLAN MUSIC IN THE BELLY

BACKSTAGE



FRONT STAGE



AUDIENCE

- 6 X STANDS 2M HIGHT
- 3 X LED PROFILE cold white (ETC S4 Lustr 2 for example)
- 6 X Pc 2kw
- 13 X Pc 1kw
- 2 X PROFILE RJ613
- 16 X PROFILE RJ614
- 1 PROFILE RJ613 or PC 1kw with bandors
- HAZER
- CURTAIN
- TEASER
- RED CURTAIN (CIE)
- MICROPHONE
- DUMMY (Called "MIRON")
- WATER SPACE
- DIMENSION OF THE STAGE