



# 100 CYMBALS / BUT WHAT ABOUT THE NOISE OF CRUMPLING PAPER...

RYOJI IKEDA / JOHN CAGE

## TECHNICAL RIDER

Last update : 2023-05-11

### **TECHNICAL CONTACT :**

Laurent FOURNAISE  
Technical manager  
[regie@percussionsdestrasbourg.com](mailto:regie@percussionsdestrasbourg.com)  
+33 (0)6 09 99 21 37

### **TEAM ON TOUR :**

10 musicians  
1 stage manager  
1 tour manager

### **PROGRAMM :**

ORDER	TITEL	COMPOSER	DURATION
01	But what about the noise of crumpling paper	John CAGE	about 15'
02	100 Cymbals	Ryoji IKEDA	35'

Duration : about 01 :00



### **TRANSPORT :**

All the equipment will be sent by a 10m<sup>3</sup> van.

**Please provide us the exact GPS location from the venue and the place of loading/unloading, and a secure parking lot for the vehicle near the performance place.**

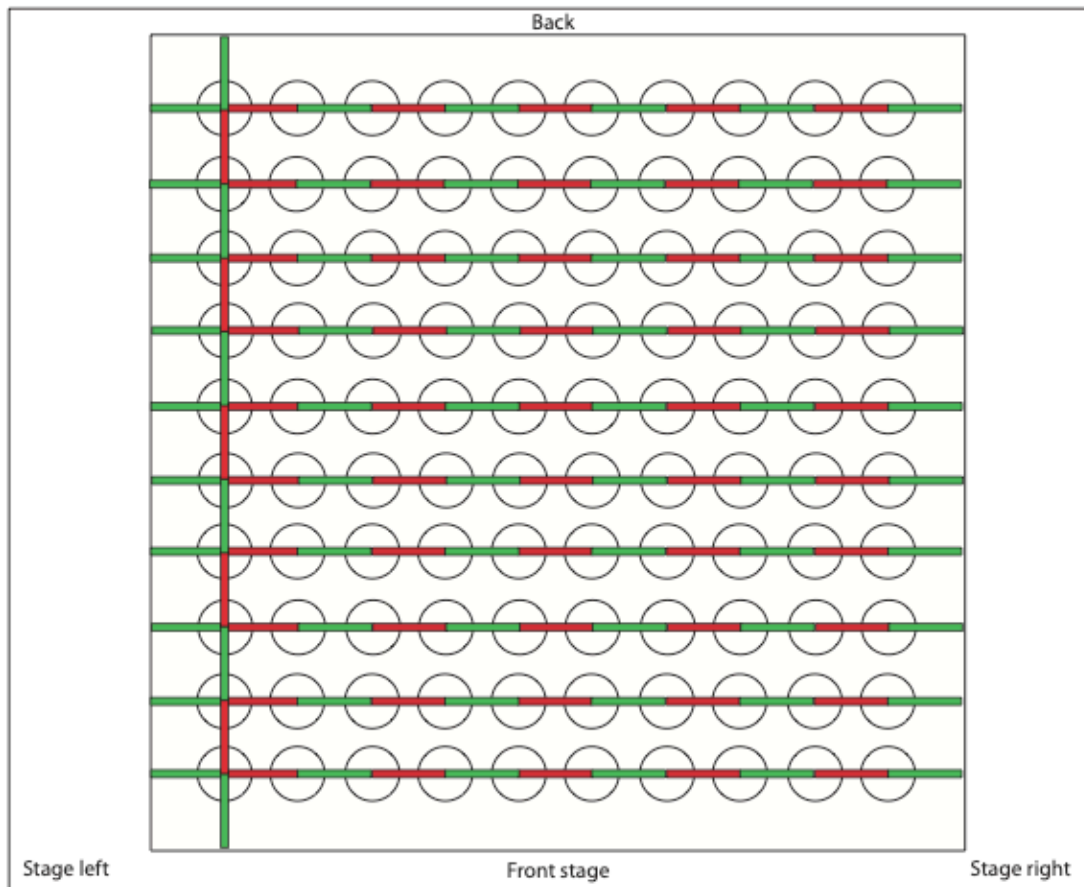
### **STAGE :**

**Please send us technical rider and plans from the venue to study the positions for each pieces.**

- Stage opening : **must be imperatively minimum 14m.**, ideal 15m.
- Stage depth : **must be imperatively minimum 14m.**, ideal 15m., from the safety curtain
- Important : stage floor cannot be higher than the audience lower row
- Floor : standard **black** theater **floor**, black ballet floor or black short carpet if the floor is not black. Can be adapted, please tell us.
- « 100 cymbals » will be play on stage
- « But what about... » will be play around the audience, positions from musicians will be decided with/on plan from the venue
- Stand seating for the audience
- Please foresee a Storage area (5m<sup>3</sup>) to stock the empty flight cases near the show



Les Percussions de Strasbourg  
Ryoji IKEDA  
100 Cymbals  
15m x 15m / Floor black!

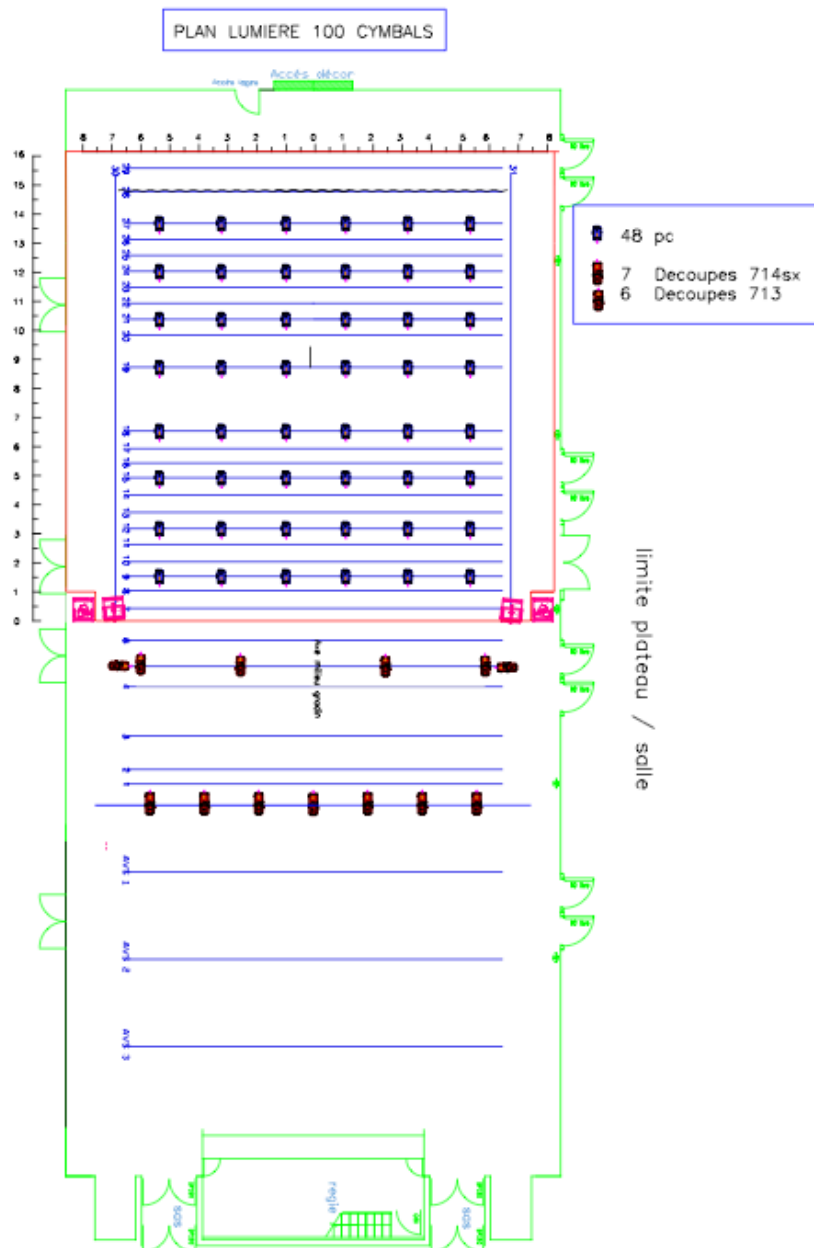




### LIGHT :

- For John Cage piece, the audience is in half light atmosphere and light for each positions if possible. Positions will be decided when we got plans, in general, around the audience.
- 100 cymbals : general square light color cold type L202
- Light must be installed before our venue and can be pre focussed.

Here's an light plot example for 100 cymbals but can be totally adapted with the material of the venue !





**TIMETABLE (CAN BE ADJUSTED) AND LOCAL CREW NEEDED :**

DAY	TIME	DESIGNATION	STAGE	LIGHT
D-1	Day	Road. Unloading at arrival, if possible and park the van in a secure park.	1 technical manager 1 technician	1 light manager
D	10 :00-12 : 00	(Unloading if not possible the day before). Set up cymbals Focus light	1 technical manager 1 technician	1 light manager 1 electrician
	14 :00-15 : 00	End of focus light, cues.	1 technical manager	1 light manager 1 electrician
	15 :00-18 : 00	Rehearsal	1 technical manager	1 light manager 1 electrician
	18 :00-19 : 00	Break		
	Evening	Performance	1 technical manager 1 technician	1 light manager 1 electrician
	After show	Uninstallation, loading and park the van in a secure place	1 technical manager 1 technician	
D+1	Morning	Departure of the van	1 person if needed	

**DRESSING ROOMS / CATERING :**

please provide us dressing rooms for 12 persons with soaps, towels, water, tea, coffee refills, cakes, dried fruit, fruits or cold plates of charcuterie and cheese bread are welcome. Dressing rooms must have sanitary, warm water and lighted mirrors.