



GHOSTLAND
by Pierre JODLOWSKI
For 4 percussion players, 1 actress, video, lights and electronics

TECHNICAL RIDER

Update : 2022-09-22

Technical contact :

Technical manager : Laurent FOURNAISE
regie@percussionsdestrasbourg.com / +33(0) 6 09 99 21 37

Sound manager : Etienne DÉMOULIN
etienne@demoulin.se / +33(0) 6 02 24 37 23

Crew on tour :

4 percussionists, 1 actress, 1 composer, 1 technical/light manager, 1 sound manager, 1 production manager.

Time of the show : about 62 minutes

Some equipments are provided by the Producer : Les Percussions de Strasbourg (P.D.S. below)



Transport of the material :

We will come with two rental vehicles (3,5 tons). Driver : Laurent

Please provide us GPS coordinates which show us the place for unloading and a secure parking lot for the vehicle near the performance place.

Stage :

**Important : stage floor cannot be higher than the audience lower row
Stand seating for the audience
See stage plans included for stage dimensions**

To be provided by the organizer :

- 5 platforms (podiums/risers) (2M X 1M, height 20cm) behind the stage, ***please see plan***
- Classical grill to hang
- Black dance carpet floor all over the stage
- 4 slings (metallic rope) length 4m certified 180 kg – those slings are used to hang the screen on the ceiling bars. If there are no flying bars, the length of the sling has to be adjustable

Backline :

Please provide us, if not possible, please tell us :

- DRUM 1 : jazz model, vintage sound (HH 14", Snare piccolo, Kick 18", 3 Toms 10"/12"/14", 3 cymbals (ride 20", crash 16", sizzle – studded 20"))
- DRUM 2 : fusion or rock model, modern sound (HH 14", Snare drum 14" x 6,5", Kick 22", 3 Toms 10"/12"/14", 3 cymbals (ride 20", crash 17", china 18"))
- DRUM 3 : fusion or rock model, modern sound (HH 14", Snare 14" x 6,5", Kick 22", 3 Toms 10"/12"/14", 3 cymbals (ride 22", crash 16", splash))
- DRUM 4 : jazz model, vintage sound (HH 14", Snare piccolo, Kick 18", 3 Toms 10"/12"/14", 2 cymbals (ride 22", crash 17"))
- 1 cymbal stands with sprocket to incline (without cymbal)

- 5 drum seats

N.B. : jazz Kick model should be smaller than Fusion or Rock Kick Model. Generally, the cymbals for Jazz kit can be heavy, deep sound when the cymbals for rock kit should be thinner and brighter.

The character of the drums sound can be improved with the amplification.

IMPORTANT : classical transparent punch skin but the other side imperatively

Remo Ambassador coated.

Provide skins spare please.



Video :

Provided by P.D.S. :

- 1 screen with black frames 7m36 x 3m50

Please provide us :

- **1 video beamer minimum 10 000 lumens short lens.** This beamer has to be placed behind the screen (shadow theater effects with performers). Therefore, the distance of this beamer has to be calculated in order to produce a 7m36 wide pictures according to its lens.

Generally we are using 0.8 lens which allows us to put this beamer back of the screen at a distance of 5,6 / 6 meters.

IMPORTANT : Video will be send and control from our MacBook Pro (HDMI plug) in the technical area in the audience (please precise us the distance between this zone and stage, we need very good see what is happening on stage).

Please provide us the system to send the signal from the technical area to the beamer on stage.

Light :

Our light/video/sound will be controlled with a mackbook pro in the technical area in the audience (we will come with) + midi controller, the software Max/Msp (<https://cycling74.com/>)

We come with and **please provide us DMX cables 3 points and adapters (power+DMX)** to link it together :

- 8 ledbars like this : https://www.thomann.de/gb/stairville_xbrick_quad_16x8w_rgbw.htm

- 2 blinders like this : https://www.thomann.de/gb/cameo_pixbar_500_pro.htm

Please provide us :

- DMX arrival on the left side of and for our led lights

- Electric 230V arrival on the right side of and for our led lights

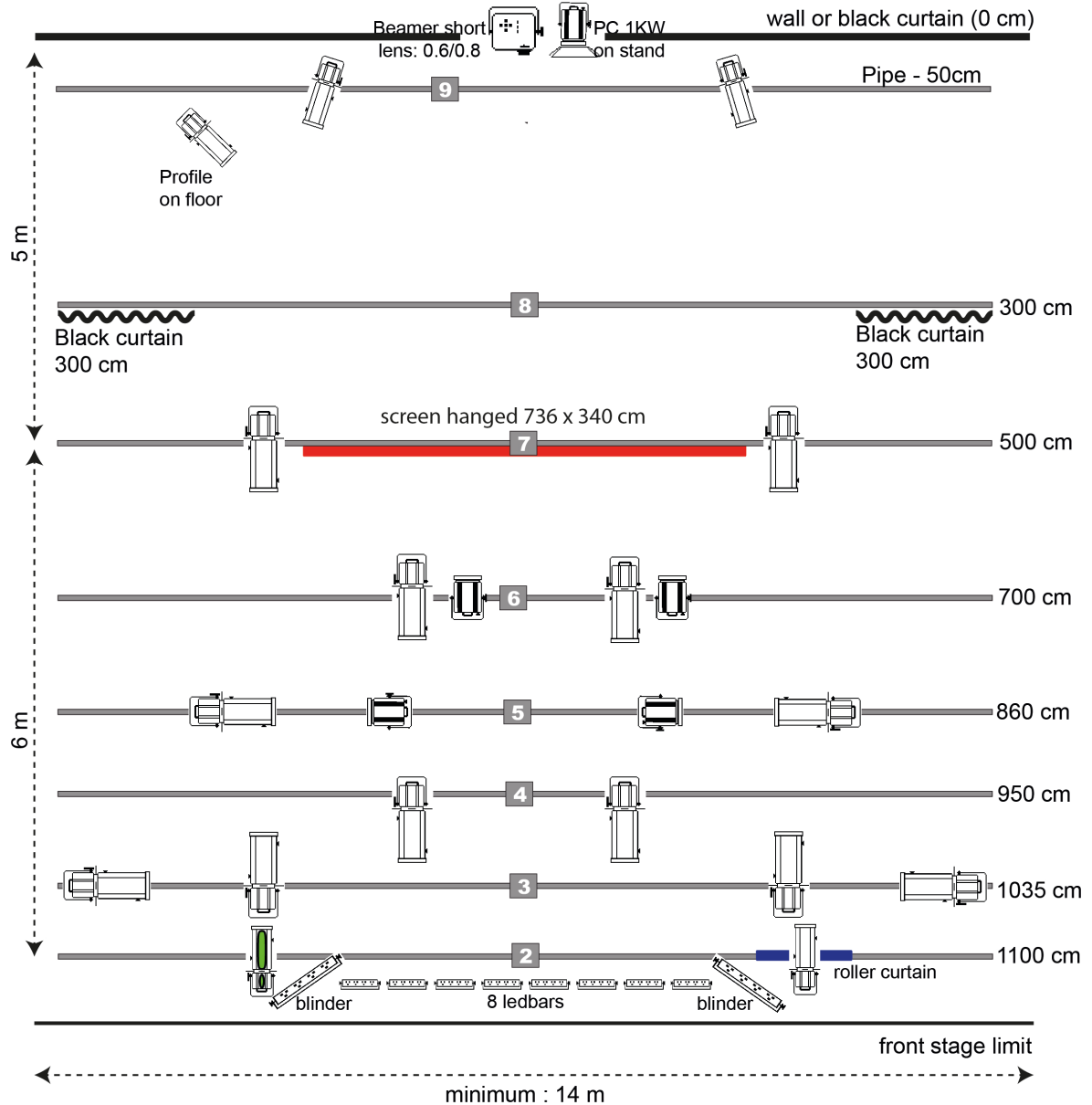
Our own light have specific DMX addresses . Please keep the DMX addresses between 400 and 464 for our material.

As we control the entire light with our own DMX controller we can use only 1 DMX univers, with 64 lines following free. If it's not possible please contact us very quickly cause we have to plug our DMX controller into you light desk.








we need 4 mic stands without boom

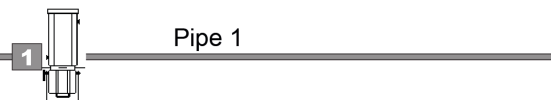
A lot of DMX (or XLR) câbles to plug our néon

GHOSTLAND - LIGHTPLOT - (can and will be adapted)



Legend :

-  8 led bars RGBW provided by P.D.S.
-  2 x Led RGBW blinders provided by P.D.S.
-  3 x 1KW zoom profile 28° - 54° +
-  1 x 1 KW zoom profile 16° - 35°
-  1 x 1KW zoom profile 16° - 35° with iris
-  13 x 2KW zoom profile as 29° - 50°
-  5 x 2KW Convex Plan





LIGHT DETAILS ON PIPES

Pipe 1 :

- 1 ZOOM PROFILE, 29°- 50°, 2K, (RJ 713 SX), Lee 201, Sharp

Pipe 2 :

- 1 ZOOM PROFILE, 16°- 35°, 1K, (RJ 614SX) + IRIS, No color, Blur - 1 ZOOM PROFILE, 16°- 35°, 1K, (RJ 614SX), No color, Sharp

- 1 roller curtain hanged with ropes

Pipe 3 :

- 4 ZOOM PROFILES, 29°- 50°, 2K, (RJ 713 SX), Lee 201, sharp + Rosco 132

Pipe 4 :

- 2 ZOOM PROFILES, 29°- 50°, 2K, (RJ 713 SX), No color, Blur or Rosco 119

Pipe 5 :

- 2 ZOOM PROFILES, 29°- 50°, 2K, (RJ 713 SX), Lee 200, Sharp + Rosco 132

- 2 PC (without barndoor), 2K, no color + Rosco 119

Pipe 6 :

- 2 ZOOM PROFILES, 29°- 50°, 2K, (RJ 713 SX), No color, Blur or Rosco 119

- 2 PC (without barndoor), 2K, no color + Rosco 119

Pipe 7 :

- 1 screen on wooden frame (736 X 340 cm)

- 2 ZOOM PROFILES, 29°- 50°, 2K, (RJ 713 SX), Lee 201, sharp + Rosco 132

Pipe 8 :

- 2 black curtains (1 on each side)

Pipe 9 :

- 2 ZOOM PROFILES, 28° - 54°, 1K, (RJ 613SX), Lee 200, Blur

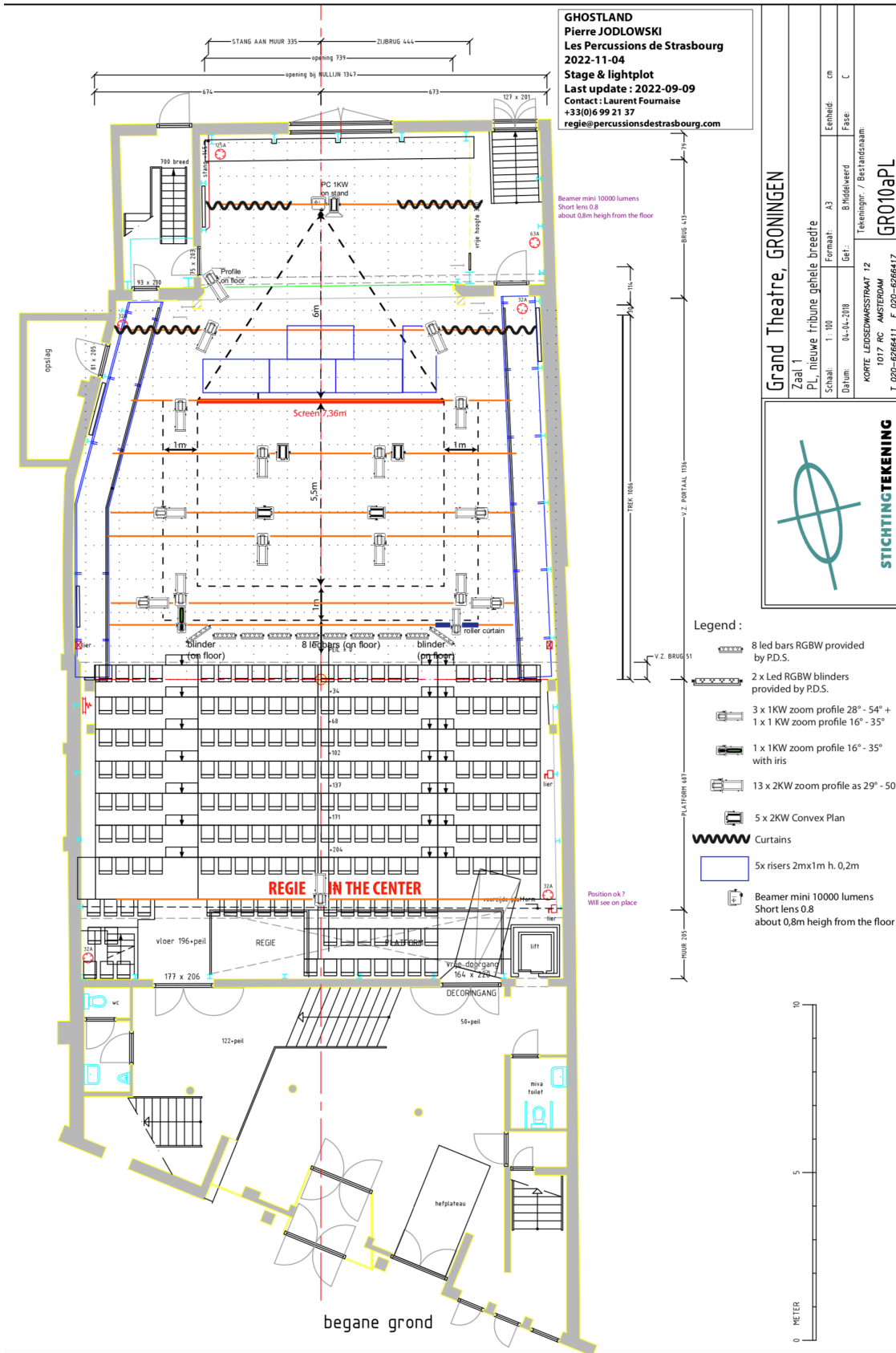
Backstage, on the floor

- 1 ZOOM PROFILE, 28° - 54°, 1K, (RJ 613SX), on the floor, Lee 106, Sharp

- 1 PC 2K with barndoor, on stand, No color, No Lens, Sharp + alu tape



Adapted plan :





Sound :

To be provided by the organizer :

Main PA :

- Professional, full-range, three-way stereo system.
- The power of the equipment suited to the size of the room.
- Configuration ensuring equal coverage of the entire audience area.
- Subs on a separate matrix.

Additional Loudspeakers :

- 2 wideband Loudspeakers 15 inch wedge position at the angles of the screen.
- 1 wideband Loudspeakers 12 inch on stands h=1,5m.
- 4 wideband Loudspeakers 15 inch hang all around audience.
- All Loudspeakers are similar in term of sound quality and power.

Mixing desk :

- Digital Desk (we prefer some with DANTE or ADAT otherwise analog wire can be used) (please provide cables RJ45 or optical for adat or jack 6,35 to the desk (sound card will be RME UCX)
- **Preferred model: Yamaha CL5.**
- The technical desk **in the centre of the audience** (for audio mixing desk and laptop computer, audio interface).

On stage:

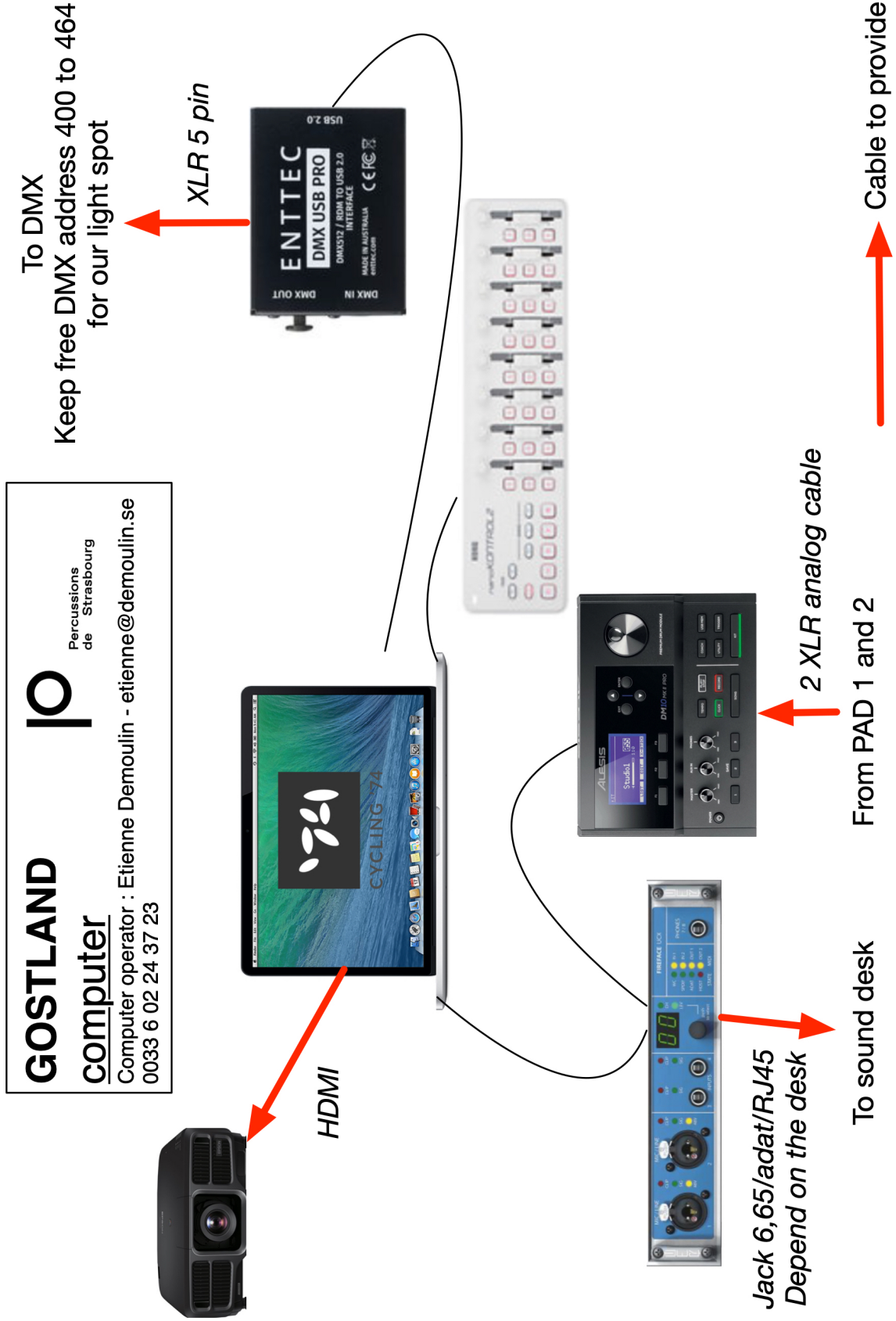
- 1 stagebox + multicore: 8 input Stage Right.
- 1 stagebox + multicore: 10 input Stage Left.
- 8 standard mic stands.
- 1 small one mic stand.
- 1 stéréo bar
- 1 table stand
- 1 professional IEM (wireless in the ear monitoring system).
- 4 DPA 4099 wired (clip on kicks drums).
- 10 Neumann KM184 with windscreen.
- 1 Shure SM58 (for the actress) with windscreen.
- 1 Audix D6 (for one of the kick).

All mics need long cables (about 25meters) cause they are moving during the show

- 2 analog XLR symmetrical lines from stage to FOH to give drum-pad midi trigger signal.

intercom

- 1 wireless intercom on stage (for Laurent)
- 2 wired intercom on mixing position (for Olivier and Etienne)

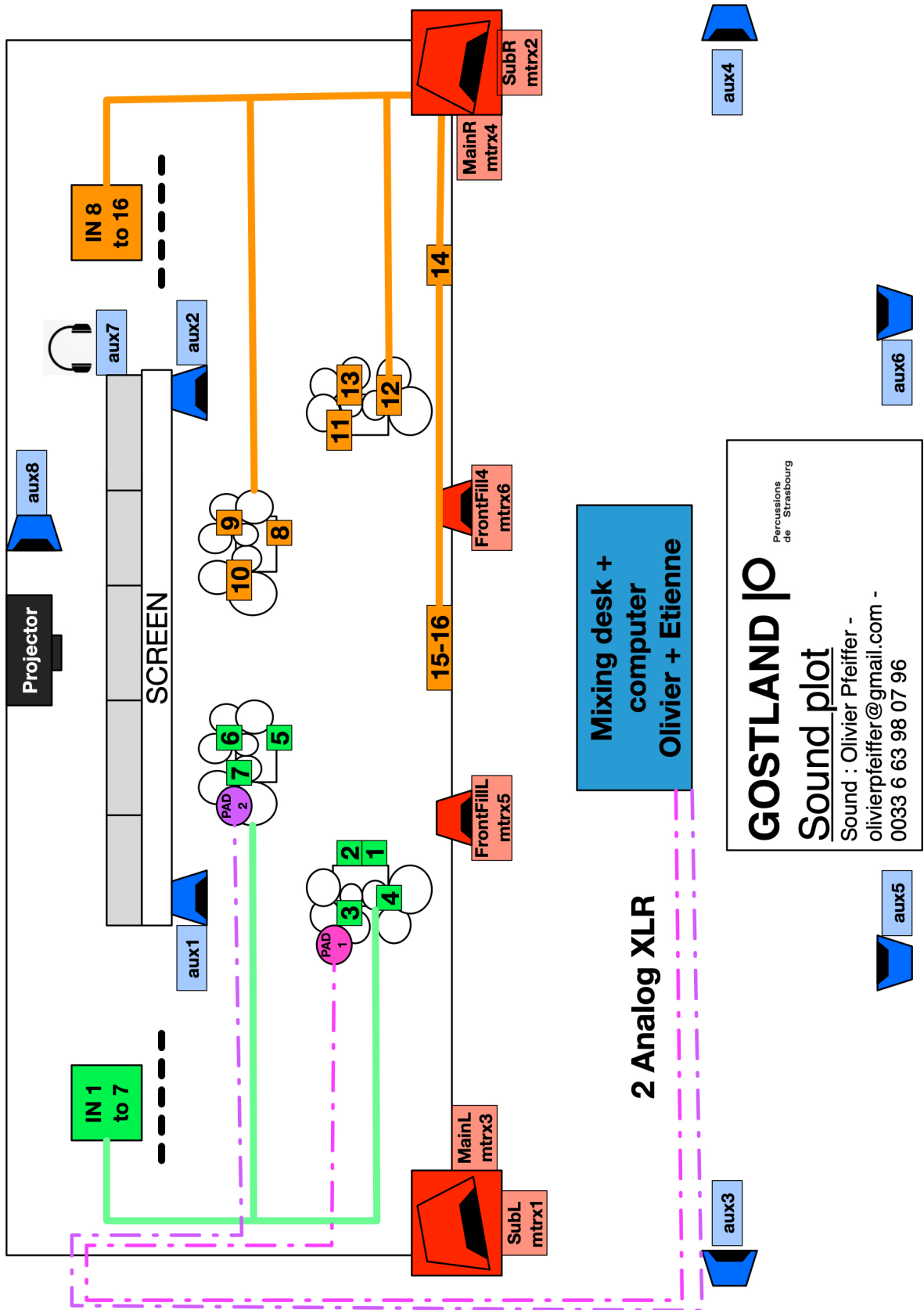




	patch	desk	name	type	stand	OUT
stage	1	1	FloGC52	shure beta 52	short stand	aux1 screenL on floor 115XT
	2	2	Flogc	DP4099	clip on bassdrum	aux2 screenR on floor 115XT
	2	3	FloGC			aux3 surLL 115XT
	3	4	FloCC	neumann KM184	regular stand	aux4 surLR audience 115XT
	4	5	FloOH	neumann KM184	regular stand	aux5 surRL 115XT
	5	6	Thgc	DP4099	clip on bassdrum	aux6 surRR 115XT
	5	7	Thgc			aux7 ear monitor in ear monitor
	6	8	ThCC	neumann KM184	regular stand	aux8 backstage stand h 1.5m 112XT
	7	9	ThOH	neumann KM184	regular stand	aux9 rev1 internal FX
	8	10	Frgc	DP4099	clip on bassdrum	aux10 rev2 internal FX
	8	11	FrGC			aux11 rev3 internal FX
	9	12	FrCC	neumann KM184	regular stand	mtrx1 SubL
	10	13	FrOH	neumann KM184	regular stand	mtrx2 SubR
	11	14	Tagc	DP4099	clip on bassdrum	mtrx3 MainL
	11	15	TaGC			mtrx4 MainR
	12	16	TaCC	neumann KM184	regular stand	mtrx5 FrontfillsL
13	17	TaOH	neumann KM184	regular stand	mtrx6 FrontfillsR	
14	18	VX	SM58	on floor		
15	19	DownstageL	neumann KM184	stéreo bar		
16	20	DownstageR	neumann KM184	Table stand		
desk	21		ordi faceL	Jack 6,35 /adat /dante		
	22		ordi faceR			
	23		ordi stageL			
	24		ordi stageR			
	25		ordi surLL			
	26		ordi surLR			
	27		ordi surRL			
	28		ordi surRR			
	29		ordi ear			
	30		rev1L		internal FX	
	31		rev1R			
	32		rev2L			
	33		rev2R			
	34		rev3L			
	35		rev3R			
	36		ordre		SM58	on desk

• Battery for ear monitor have to be new for the show
 • If the show play outside windscreen are mandatory
 • link between Pads and computer
 have to be 2 analog XLR cables

GOSTLAND 
Sound_patch
 Sound : Olivier Pfeiffer - olivierpfeiffer@gmail.com -
 0033 6 63 98 07 96





Timetable and local crew provided by the organizer :

DATE	TIME	DESIGNATION	STAGE	LIGHT	SOUND	VIDEO
02/11	Day	Road of the truck (15m3) Park on a safe place				
03/11	09 :00-13 :00	Unloading truck. Setup : screen, lights, sound and video	1 technical manager 2 technicians	1 light manager 2 technicians	1 sound manager 1 technician	1 video manager
	14 :00-18 :00	Finishing set up and focussing light	1 technical manager 2 technicians	1 light manager 2 technicians	1 sound manager 1 technician	1 video manager
	19 :00-22 :00	Sound check and rehearsal	1 technical manager	1 light manager	1 sound manager	1 video manager
04/11	09 :00-11 :00	Technical check + adjustments focus if needed	1 technical manager	1 light manager	1 sound manager	1 video manager
	11 :00-13 :00	Rehearsal	1 technical manager	1 light manager	1 sound manager	1 video manager
	14 :30-18 :30	Rehearsal / General rehearsal	1 technical manager	1 light manager	1 sound manager	1 video manager
	18 :30-19 :00	Clean stage / set up for beginning	1 technical manager	1 light manager	1 sound manager	1 video manager
	20 :30	Show	1 technical manager	1 light manager	1 sound manager	1 video manager
	After show	Uninstallation (about 2-3 :00 time needed) and loading the truck	1 technical manager 2 technicians	Local crew	Local crew	Local crew
05/11	Morning	Departure of the truck	1 local crew			

Dressing rooms and dresser :

We need dressing rooms for 6 artists (4 men, 2 woman) with soaps, towels. We highly appreciate bottles of water for 8 persons, tea, coffee refills, cakes, dried fruit, fruit...

A dresser will be needed the day of performance before the dress rehearsal to take care of the musicians costumes.