

## Technical Rider

### « RAINS »

Last update : 3 december

**Performers :** Les Percussions de Strasbourg

**Length of the show :** around 1h

**Technical and Light Manager :** Claude Mathia

claude.mathia@yahoo.fr

Tel (Cel): +33 (0)6 73 32 53 52

**Team on tour :**

6 musicians

1 stage manager / light technician

1 truck driver / assistant stage manager

**CONCERT PROGRAM:**

TITLE	COMPOSER	DURATION
Sange	Malika KISHINO	15 min
Rain Tree	Toru TAKEMITSU	8 min
Regentanz	Toshio HOSOKAWA	15 min
Hiérophonie V	Yoshihisa TAÏRA	19 min

**TECHNICAL MANAGER**

Claude Mathia

claudemathia@yahoo.fr

Phone : 33 (0)6 73 32 53 52

## TRUCK

All the equipment of the Percussions de Strasbourg will be sent by truck 19t.  
Please see below the informations about the truck.

### Truck information :

For now, we haven't any specifications about the truck we will have.  
These informations should be send, at least, 1 month before the concert.

## STAGE

- ⤴ Stage opening : minimum 12m/ maximum 15m.
- ⤴ Stage depth : minimum 8m from the safety curtain.
- ⤴ Please foresee a storage area in order to have the flight cases near the stage.

## TIMETABLE AND LOCAL CREW (This timetable is subject to change)

- ⤴ *The local crew we ask for must be present at the times indicated on this schedule.*
- ⤴ *The technicians present during the rehearsal must be the same for the show.*

DAY	TIMETABLE	PLANNING	STAGE
??/ ??/ ??	17:00-18:00	Truck arrival Unload the truck	1 man. (manager) 4 tech.
??/ ??/ ??	09 :00-12 :00	Set up the instruments	1 man.
	12 :00-13 :30	Break	
	13 :30-14 :30	Set up the instruments	1 man.
	14 :30-15 :00	Instruments adjustment by the musicians.	1 man.
	15 :00-16 :00	Light focus	1 man. 2 tech.
	16 :00-19 :00	Rehearsal	1 man.
	19 :30	Public entrance	
	20 :00-21 :00	CONCERT	
	21 :15-00 :00	Dismantling and tidy up the instruments Load the truck.	1man. 4 tech.
??/ ??/ ??	08:00	Truck departure.	

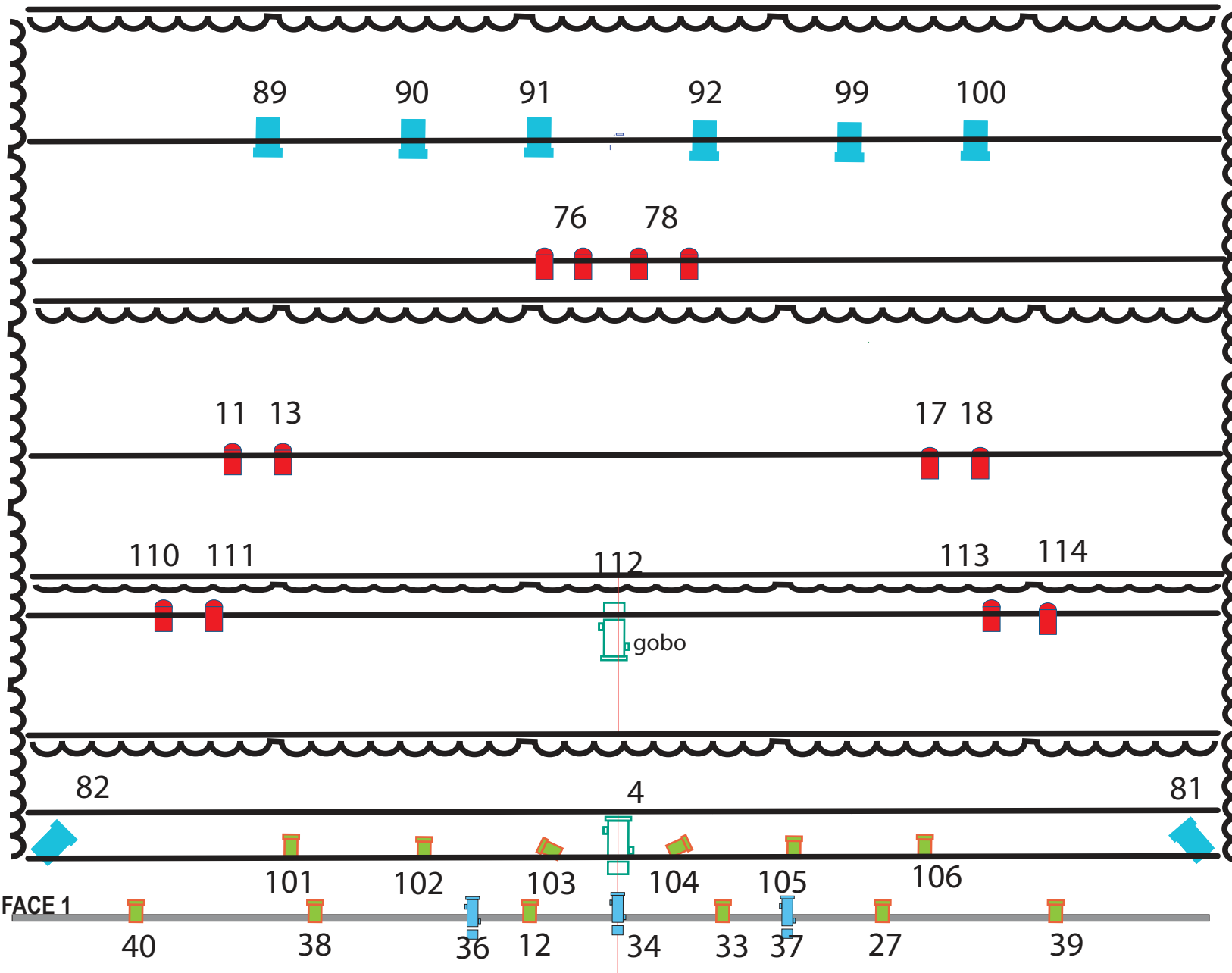
## DRESSING ROOM/CATERING






Please provide dressing rooms (7 mens, 1 woman) and a catering for all the company.  
The dressing rooms must have sanitary, warm water, and lighted mirrors.

TECHNICAL MANAGER  
Claude Mathia  
claudemathia@yahoo.fr  
Phone : 33 (0)6 73 32 53 52



# LUMIERE "RAINS"



- 8X  Pc 2kw
- 11X  Pc 1kw
- 12X  Pars c60
- 3X  Découpe 1kw 12/30
- 2X  Découpe 2kw 12/30

 PENDRILLONS